

# TERMINATION TAB & EPOXY 600 WATT



DATA SHEET

PART SERIES: 82A7195TEF

SHEET 1 OF 2  
Dwg 1015625

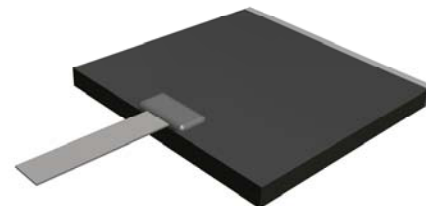
EN 16-0483  
Revision -

## FEATURES

- Wide Band Response
- High Power
- Direct Attached
- Low VSWR
- Easy installation
- Excellent Heat Transfer

## APPLICATIONS

- Mobile Networks
- Broadcast
- High Power Amplifiers
- Isolators
- Military
- Instrumentation



## GENERAL DESCRIPTION

EMC Technology offers the widest selection of flangeless terminations worldwide.  
Tab and Epoxy components offer the highest performance of any style of termination component.

## ORDERING INFORMATION

**Part Identifier: 82A7195TEF**

## SPECIFICATIONS

### 1.0 ELECTRICAL

Nominal Impedance:	50 ohms
Frequency Range:	2.4 – 2.5 GHz
VSWR:	1.17:1 MAX
Input Power CW:	600 Watts @ 100°C heat sink, derated linearly to zero power and 150°C
Peak Power:	6 Kilowatts (based on 10µs pulse width and 1% duty cycle)
DC Resistance:	50 Ω 5%

### 2.0 ENVIRONMENTAL

Operating Temperature:	-55°C to +150°C
Non-operating Temperature:	-65°C to +150°C
Temperature Coefficient:	+/-200 PPM / °C max

### 3.0 MARKING

Unit Marking:	N/A
---------------	-----

### 4.0 QUALITY ASSURANCE

Visual and Mechanical Inspection:	Per 824W107
DC Resistance Check:	100% DC Resistance Check
Data Retention:	Standard

### 5.0 PACKAGING

Standard Packaging:	Tray Packaging
---------------------	----------------

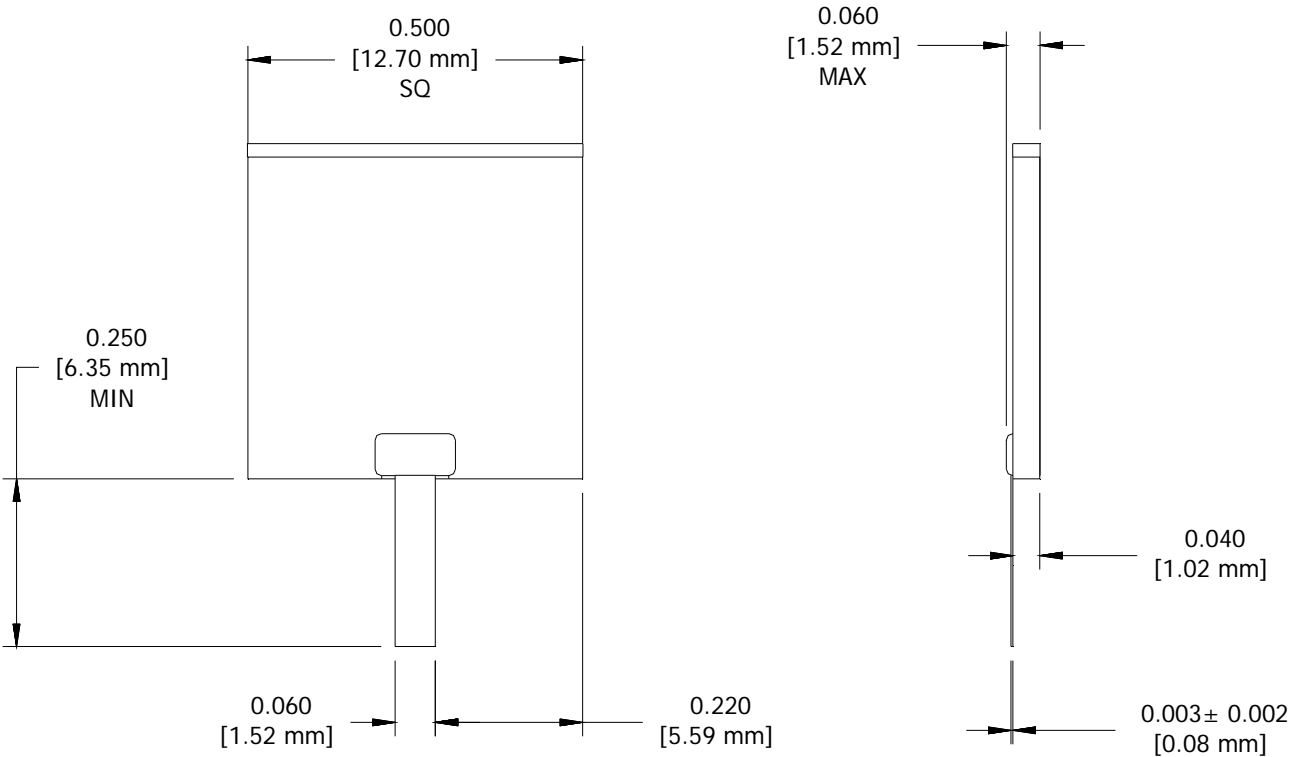
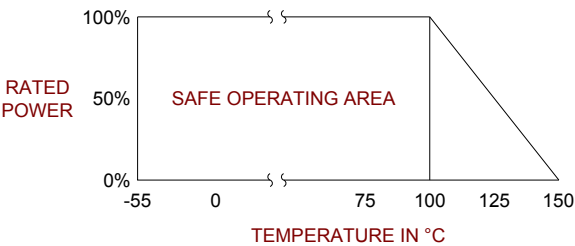
# TERMINATION

## TAB & EPOXY 600 WATT



### 6.0 MECHANICAL

Substrate Material:	Aluminum Nitride
Resistive Film:	Thin Film
Tab Material:	Beryllium Copper
Tab Finish:	Silver
Metric Dimensions:	Provided for reference only



Unless Otherwise Specified: TOLERANCE: X.XX = ± 0.01 X.XXX = ± 0.005