

ATTENUATOR FLANGE MOUNT 100 WATT



DATA SHEET

PART SERIES: 33A7004XX.XXF

SHEET 1 OF 2
Dwg 33A7004F

EN 13-3529
Revision-

FEATURES

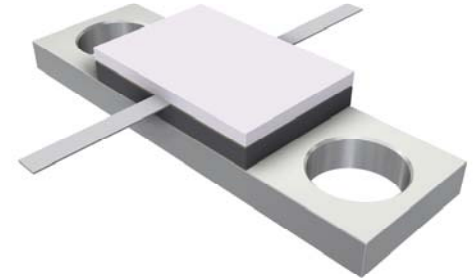
- Tab Launch
- High Power
- Integrated Heat Sink
- Low VSWR
- Easy Installation

APPLICATIONS

- Mobile Networks
- Broadcast
- High Power Amplifiers
- Isolators
- Military
- Instrumentation

GENERAL DESCRIPTION

EMC Technology offers the widest selection of flange mount attenuators worldwide. High power flange components offer excellent performance and the convenience of bolt on installation.



ORDERING INFORMATION

Part Identifier

33A7004XX.XXF

Attenuation Value

SPECIFICATIONS

1.0 ELECTRICAL

Nominal Impedance:	50 ohms
Frequency Range:	DC - 3.0 GHz
Attenuation Values Available:	1 through 20 dB in 1 dB increments and 30 dB
Attenuation Accuracy:	1 through 10 ± 1.0 dB 11 through 20 ± 1.0 dB 30 ± 1.0 dB
Input Power CW:	100 watts @ 100°C heat sink, derated linearly to zero power at 150°C
Peak Power:	1000 watts (based on 10us pulse width and 1% duty cycle)
VSWR:	DC – 1.0 GHz 1.15:1 Max 1.0 - 2.0 GHz 1.25:1 Max 2.0 - 3.0 GHz 1.30:1 Max

2.0 ENVIRONMENTAL

Operating Temperature:	-55°C to +150°C
Non-operating Temperature:	-65°C to +150°C
Temperature Coefficient:	+/-200 PPM / °C max

3.0 MARKING

Unit Marking:	Logo and Part Number; legibility and permanency per MIL-STD-130
---------------	---

4.0 QUALITY ASSURANCE

Sample Inspect Per MIL-STD-105, Level II, 1.0% AQL.
Visual and Mechanical Examination for Conformance To Outline Drawing Requirements.
Measure Attenuation and VSWR
Data Retention – Standard

5.0 PACKAGING

Standard Packaging:	Tray
---------------------	------

ATTENUATOR FLANGE MOUNT 100 WATT



DATA SHEET

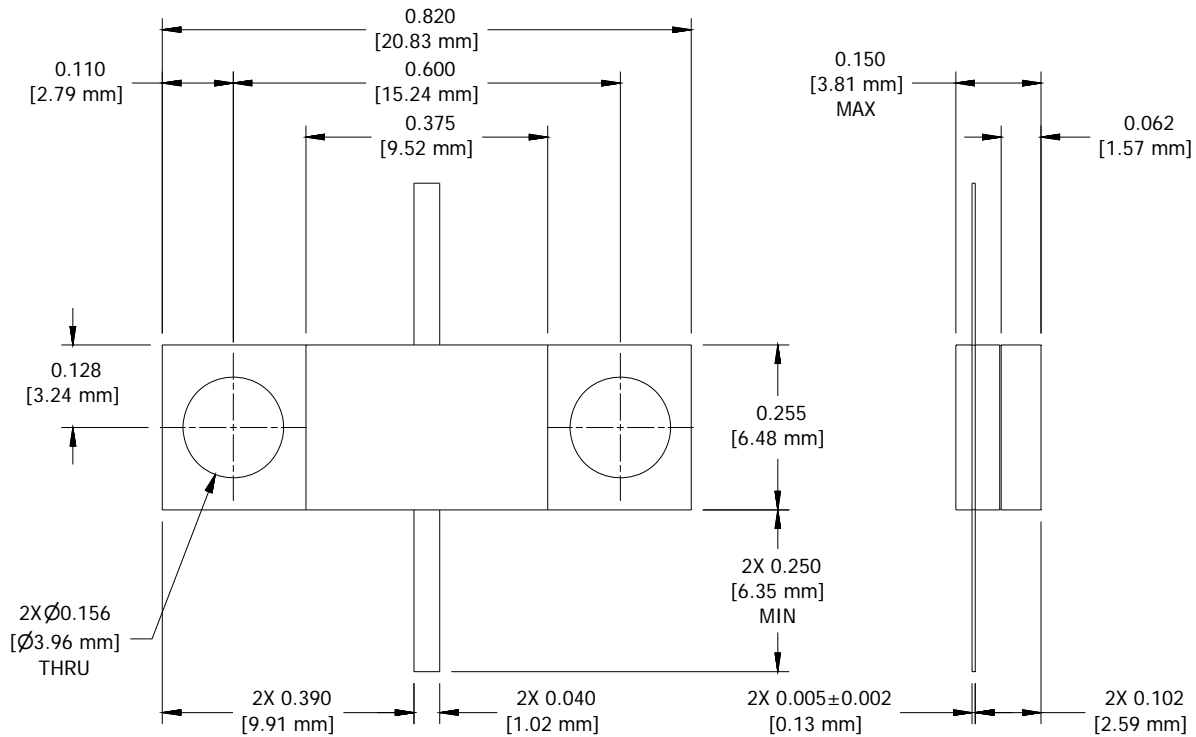
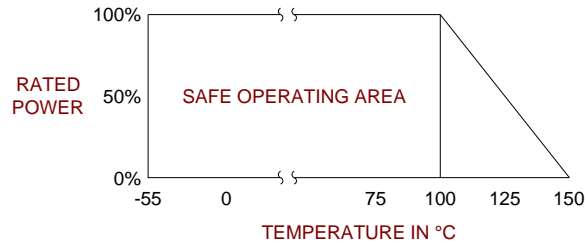
PART SERIES: 33A7004XX.XXF

SHEET 1 OF 2
Dwg 33A7004F

EN 13-3529
Revision-

6.0 MECHANICAL

Substrate Material:	Aluminum Nitride
Resistive Film:	Thin Film
Cover Material:	Alumina
Tab Material:	Beryllium Copper
Tab Finish:	Silver plated
Flange Material:	Copper
Flange Finish:	Nickel
Metric Dimensions:	Provided for reference only



Unless Otherwise Specified: TOLERANCE: X.XX = ± 0.02 X.XXX = ± 0.010