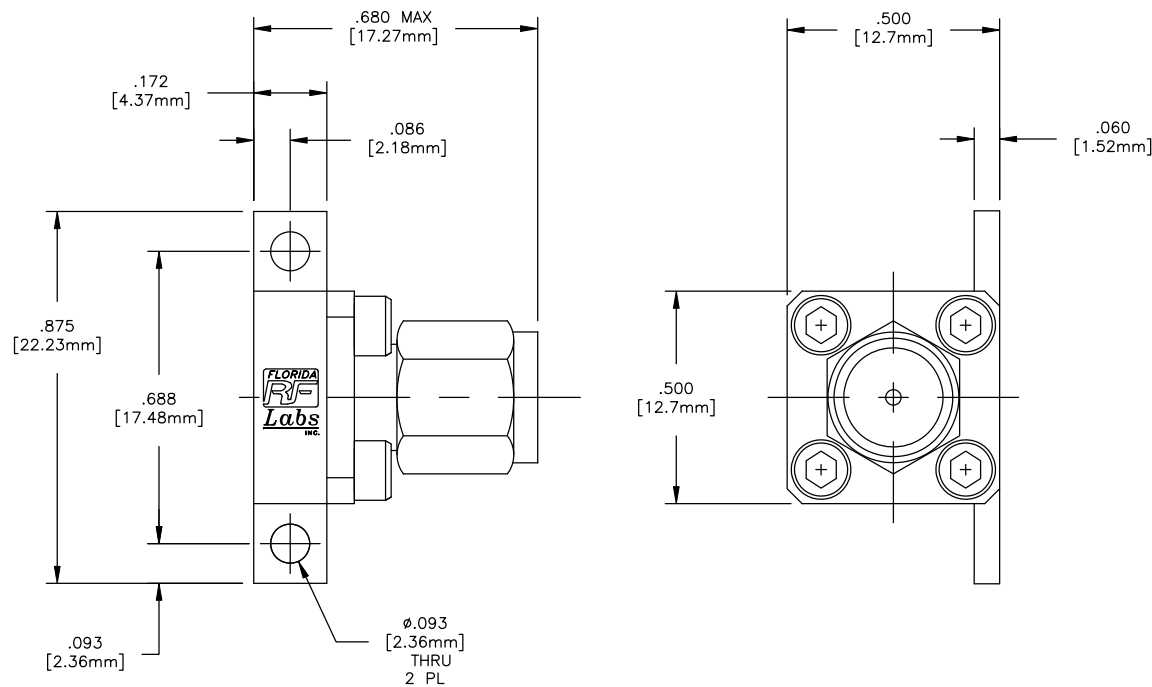


NOTE:
UNLESS OTHERWISE SPECIFIED TOLERANCES ARE ± .005 (.127mm)



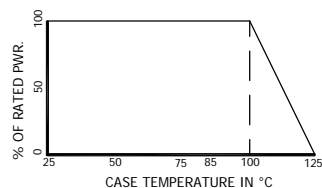
- MATERIALS:
- BASE HOUSING: ALUMINUM
 - SUBSTRATE: BERYLLIUM OXIDE
 - RESISTIVE FILM: NICHROME
 - SCREWS: STAINLESS STEEL
 - CONNECTOR:
 - BODY & C NUT: STAINLESS STEEL PER QQ-S-764
 - CONTACT: BERYLLIUM COPPER PER QQ-C-530, COND.H, ALLOY 173
 - INSULATOR: TEFLON PER MIL-P-19468
 - GASKET: SILICONE RUBBER PER ZZ-R-765
- FINISH:
- BASE HOUSING: NICKEL PER QQ-N-290A
 - CONNECTOR:
 - BODY & C NUT: CORROSION RESISTANT IAW MIL-STD-202
 - CONTACT: GOLD PER MIL-G-45204B

G	06/25/13	VL	13-1949
F	05/13/13	NOA	13-1627
E	03/19/13	NOA	13-0948
D	3/6/13	TS	13-0757
C	10/23/07	MCS	07-F1065
REV	DATE	BY	EN NUMBER

<p>8851 SW OLD KANSAS AVE STUART, FL 34997 PHONE NO. (772) 286-9300 FAX NO. (772) 283-5286</p>	<p>UNLESS OTHERWISE SPECIFIED</p> <p>1. DO NOT SCALE DRAWING 2. DIMENSIONS ARE IN INCHES 3. DIMENSIONS ARE AFTER PLATING 4. CORNERS, EDGES AND FILLETS: R 0.005 MAX 5. SURFACE ROUGHNESS: N/A 6. REMOVE ALL BURRS</p>	TITLE								
	<p>TOLERANCES</p> <p>X.XX ± 0.01 X.XXX ± 0.010 FRACTIONS ± 1/16 X.XXXX ± 0.0005 ANGLES ± 5°</p>	<p>TERMINATION, SMA PLUG, 25 WATT</p>								
<p>THESE DRAWINGS AND SPECIFICATIONS ARE THE PROPERTIES OF EMC TECHNOLOGY AND FLORIDA RF LABS AND SHALL NOT BE DUPLICATED OR USED AS BASIS FOR THE MANUFACTURE OR SALES OF PARTS OR DEVICES WITHOUT PERMISSION.</p>		DRAWING NUMBER								
<p>REFERENCE / MACOLA NO.</p> <p>-</p>		<p>12-3022SM</p>								
MATERIAL	FINISH	<table border="1"> <tr> <td>EMC CAGE CODE</td> <td>RF CAGE CODE</td> <td>PLOT SCALE</td> <td>SHEET</td> </tr> <tr> <td>24602</td> <td>2Y194</td> <td>N/A</td> <td>1 OF 2</td> </tr> </table>	EMC CAGE CODE	RF CAGE CODE	PLOT SCALE	SHEET	24602	2Y194	N/A	1 OF 2
EMC CAGE CODE	RF CAGE CODE	PLOT SCALE	SHEET							
24602	2Y194	N/A	1 OF 2							

ELECTRICAL REQUIREMENTS	RATING	PARTS SHALL BE DESIGNED TO BE CAPABLE OF MEETING THESE REQUIREMENTS	RATING
NOMINAL IMPEDANCE (OHMS)	50	INTERFACE DIMENSIONS	MIL-STD-39012 /SMA Series
FREQUENCY RANGE (GHz)	DC - 18.0		
VSWR (MAXIMUM)	DC - 18.0 GHz: 1.25:1	VIBRATION	MIL-STD-202 METHOD 204 COND. D (20 G's)
AVERAGE POWER (WATTS)	25		
DC RESISTANCE	50 OHMS ±5%	SHOCK	MIL-STD-202 METHOD 213 COND. 1 (100 G's)
		THERMAL SHOCK	MIL-STD-202 METHOD 107 COND. B (-65 TO +125)°C
		BAROMETRIC PRESSURE	MIL-STD-202 METHOD 105 COND. C
		TEMPERATURE COEFFICIENT	LESS THAN 200 PPM
		OPERATING TEMPERATURE (°C)	-55 TO +125

AVERAGE POWER DERATING



<p>8851 SW OLD KANSAS AVE STUART, FL 34997 PHONE NO. (772) 286-9300 FAX NO. (772) 283-5286</p>	<p>UNLESS OTHERWISE SPECIFIED</p> <p>1. DO NOT SCALE DRAWING 2. DIMENSIONS ARE IN INCHES 3. DIMENSIONS ARE AFTER PLATING 4. CORNERS, EDGES AND FILLETS: R 0.005 MAX 5. SURFACE ROUGHNESS: N/A 6. REMOVE ALL BURRS</p>	TITLE		
	<p>TOLERANCES</p> <p>X.XX ± 0.01 X.XXX ± 0.010 FRACTIONS ± 1/16 X.XXXX ± 0.0005 ANGLES ± 5°</p>	<p>TERMINATION, SMA PLUG, 25 WATT</p>		
<p>THESE DRAWINGS AND SPECIFICATIONS ARE THE PROPERTIES OF EMC TECHNOLOGY AND FLORIDA RF LABS AND SHALL NOT BE DUPLICATED OR USED AS BASIS FOR THE MANUFACTURE OR SALES OF PARTS OR DEVICES WITHOUT PERMISSION.</p> <p>REFERENCE / MACOLA NO. -</p>	DRAWING NUMBER			
MATERIAL	<p>12-3022SM</p>			
FINISH	<p>EMC CAGE CODE 24602</p>	<p>RF CAGE CODE 2Y194</p>	<p>PLOT SCALE N/A</p>	<p>SHEET 2 OF 2</p>

G	06/25/13	VL	13-1949
F	05/13/13	NOA	13-1627
E	03/19/13	NOA	13-0948
D	3/6/13	TS	13-0757
C	10/23/07	MCS	07-F1065
REV	DATE	BY	EN NUMBER