

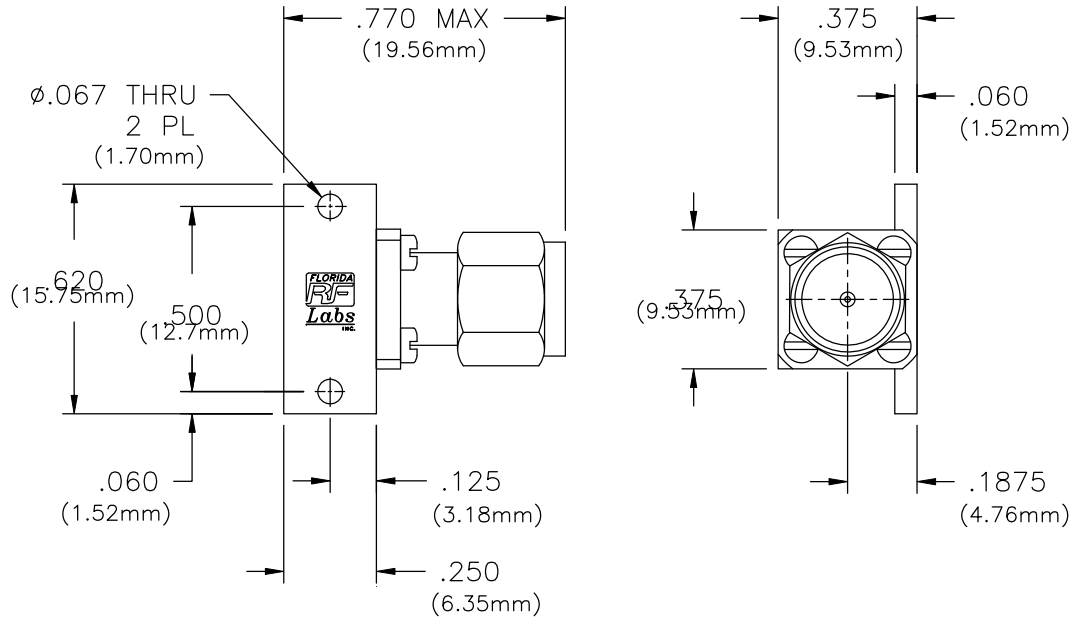
UNLESS OTHERWISE SPECIFIED TOLERANCES ARE  $\pm 0.005"$  (.127mm)

DRAWING NO.

12-3001SM

REV.

A




**MATERIALS:**

- BASE HOUSING: ALUMINUM
- SUBSTRATE: BERYLLIUM OXIDE
- RESISTIVE FILM: NICHROME
- SCREWS: STAINLESS STEEL
- CONNECTOR:
  - BODY & C. NUT: STAINLESS STEEL PER QQ-S-764
  - CONTACT: BERYLLIUM COPPER PER QQ-C-530
  - COND. H. ALLOY 173
  - INSULATOR: TEFLON PER MIL-P-19468

**FINISH:**

- BASE HOUSING: NICKEL PER QQ-N-290A
- CONNECTOR:
  - BODY & C. NUT: CORROSION RESISTANT IAW MIL-STD-202
  - CONTACT: GOLD PER MIL-G-45204B

				UNLESS OTHERWISE SPECIFIED			REFERENCE		 P.O. BOX 899 STUART, FL. 34995	
				1. DIMENSIONS ARE AFTER PLATING 2. DIAMETERS ON COMMON C TO BE CONCENTRIC WITHIN _____ T.I.R. 3. SURFACE ROUGHNESS _____ 4. CORNERS AND EDGES _____ R. MAX. 5. REMOVE BURRS AND BREAK SHARP EDGES			CATALOG			
				TOLERANCES			MATERIAL _____		TITLE	
				DECIMAL FRACTION ANGLES .X ± _____ .XX ± ± _____ .XXX ± _____ ALL DIMENSIONS ARE IN INCHES			FINISH _____		TERMINATION, SMA PLUG, 15 WATT	
A	EN 08-F0808	09/08		SCALE		CAGE CODE ID NO.	SIZE	DRAWING NO.	REV.	
N/C	RLSE#02360	04/98		2X		2Y194	A	12-3001SM	A	
REV.	DESCRIPTION	DATE	APPR.	APPR.		CHK	DRAWN GEC 04/01/98		SHEET 1 OF 2	

DRAWING NO.	12-3001SM	REV.	A
-------------	-----------	------	---

REQUIREMENTS	RATING	REQUIREMENTS	RATING														
NOMINAL IMPEDANCE (OHMS)	50	INTERFACE DIMENSIONS	MIL-STD-39012 /SMA Series														
FREQUENCY RANGE (GHz)	DC - 18.0																
TEMPERATURE COEFFICIENT	LESS THAN 200 PPM	VIBRATION	MIL-STD-202 METHOD 204 COND. D (20 G's)														
OPERATING TEMPERATURE (°C)	-55 TO +125																
VSWR (MAXIMUM)	DC-18.0 GHz: 1.20:1	SHOCK	MIL-STD-202 METHOD 213 COND. 1 (100 G's)														
AVERAGE POWER (WATTS)	15																
DC RESISTANCE	50 OHMS ±2%	THERMAL SHOCK	MIL-STD-202 METHOD 107 COND. B (-65 TO +125)°C														
		BAROMETRIC PRESSURE	MIL-STD-202 METHOD 105 COND. C														
<p style="text-align: center;">AVERAGE POWER DERATING</p> <table border="1"> <caption>Average Power Derating Data</caption> <thead> <tr> <th>Case Temperature (°C)</th> <th>% of Rated Power</th> </tr> </thead> <tbody> <tr> <td>25</td> <td>100</td> </tr> <tr> <td>50</td> <td>100</td> </tr> <tr> <td>75</td> <td>100</td> </tr> <tr> <td>85</td> <td>100</td> </tr> <tr> <td>100</td> <td>100</td> </tr> <tr> <td>125</td> <td>0</td> </tr> </tbody> </table>		Case Temperature (°C)	% of Rated Power	25	100	50	100	75	100	85	100	100	100	125	0		
		Case Temperature (°C)	% of Rated Power														
		25	100														
50	100																
75	100																
85	100																
100	100																
125	0																

TITLE TERMINATION, SMA PLUG, 15 WATT		P.O. BOX 899 Stuart, FL. 34995	DRAWN	GEC 04/01/98	DRAWING NO.	12-3001SM	REV.	A
			SHEET	2 OF 2				